



Artist's impression only

Facade: Elwood

External Colour: Fig

Home facade and colour may vary in accordance with your house lot.

Harper

The Harper offers a sought after layout with fabulous must have inclusions to make your life a dream. You will love the walk-in robe, butler's pantry, guest bedroom and large laundry.



Another quality home
by Lifestyle Communities

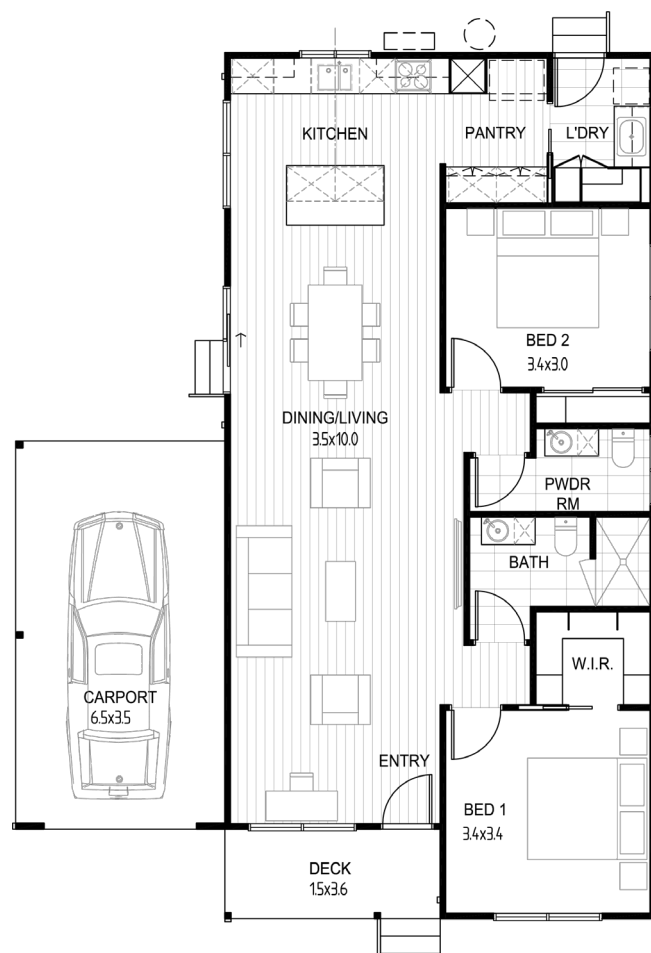
1300 50 55 60  lifestyledeanside.com.au

Lifestyle
DEANSIDE
Over 50s Resort Living

Harper

Standard Inclusions

- ✓ Solar panels
- ✓ Plantation shutters to front facade windows
- ✓ Window furnishings throughout
- ✓ Modern kitchen with stone benchtop, stainless steel appliances including 600mm cooktop and soft close drawers
- ✓ LED strip lighting under overhead kitchen cupboard
- ✓ Walk-in robe to main bedroom
- ✓ Contemporary bathroom with stone benchtop, 2100mm high semi-frameless shower screen and tiled shower base
- ✓ Split system for heating and cooling
- ✓ LED downlights
- ✓ External wall and ceiling insulation
- ✓ Landscaped front garden
- ✓ Colorbond garden shed with concrete floor
- ✓ Front security screen door with stainless steel mesh
- ✓ Clothesline
- ✓ Automatic panel lift door to carport
- ✓ Opticomm enabled



Living	99.00m ²	10.65sq
Carport	22.75m ²	2.45sq
Verandah	5.40m ²	0.60sq
Total	127.15m²	13.70sq

**For more information
contact your Lifestyle
Consultant on 1300 50 55 60**

Photographs and illustrations are intended to be a visual aid only and may not accurately represent the actual home. Facade may change at each Lifestyle Community. Drawings not to scale and subject to change without notice. All details are correct at time of publication. E&OE. © 2021 Lifestyle Communities Limited.