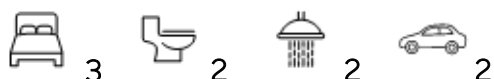




This charming resale home won't last long!

Lot 151/14 Peace Crescent, Clyde



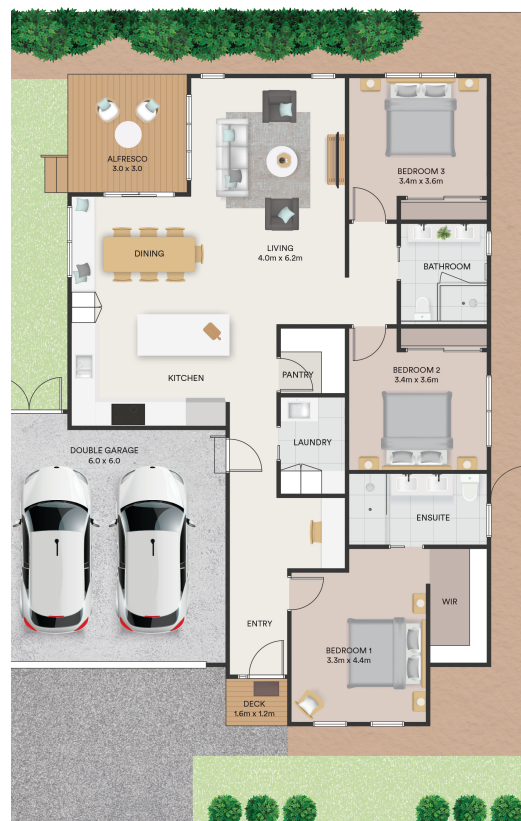
\$775,000

Discover your personal oasis in this resale home, featuring a spacious master bedroom with an ensuite and a large walk-in robe. With two additional bedrooms, a central bathroom, a study nook, and a laundry with built-in storage, this home is perfect for enjoying social occasions with friends and family or simply relaxing in.

- Open Plan Living: The kitchen, dining, and living areas are designed with an open plan, creating a sense of spaciousness and flow. The kitchen includes stainless steel appliances and a walk-in pantry.
- Outdoor Area: The large alfresco has external blinds added, making it ideal to enjoy all year round. With tinted windows throughout the home, you benefit from extra privacy and ceiling fans in all bedrooms.
- Charming window seat right by the dining area

With our multi-million-dollar Clubhouse to enjoy, this is a great opportunity to purchase this sought-after home.

For more information contact your Lifestyle Consultant on 1300 50 55 60





For more information contact your
Lifestyle Consultant on 1300 50 55 60