



Effortless Living for your Next Chapter

Lot 153/10 Peace Crescent, Clyde



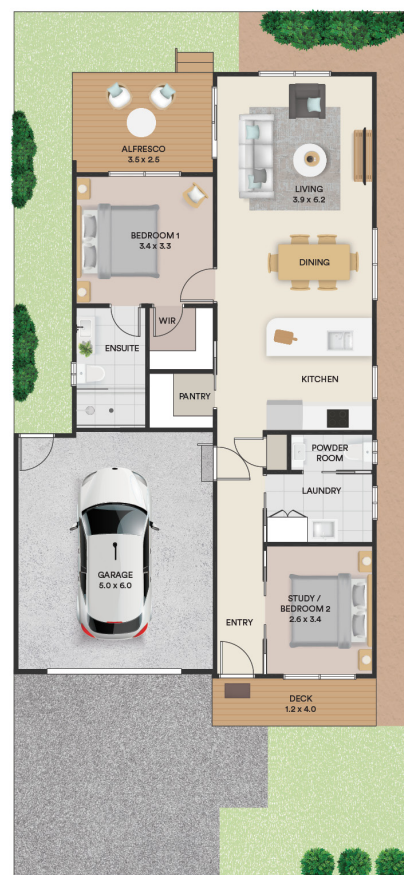
\$525,000

Designed with downsizers in mind, this resale one bedroom + multi purpose room offers low-maintenance living without compromising on style, space, or comfort.

Standout features:

- Versatile multipurpose room – ideal as a home office, hobby room or guest space
- Premium kitchen with 40mm stone benchtops, walk-in pantry & soft-close drawers
- Light-filled open-plan living flowing to a sunny east-facing alfresco
- Private master suite with walk-in robe and ensuite
- Spacious 5m x 6m fully lined 1.5-car garage – perfect for one vehicle plus storage
- Just a short stroll to our multi-million dollar Clubhouse

Enjoy your freedom with a home that's built for easy living and everyday enjoyment. Secure it today!



For more information contact your
Lifestyle Consultant on 1300 50 55 60



For more information contact your
Lifestyle Consultant on 1300 50 55 60